

## 1. Taping specifications

All models of SC-74 package product is wrapped to tape.

For more information about taping dimensions, please refer to figure 1. tape shape and dimensions.

## 2. Ordering unit

It is wrapped 3,000 by one reel.

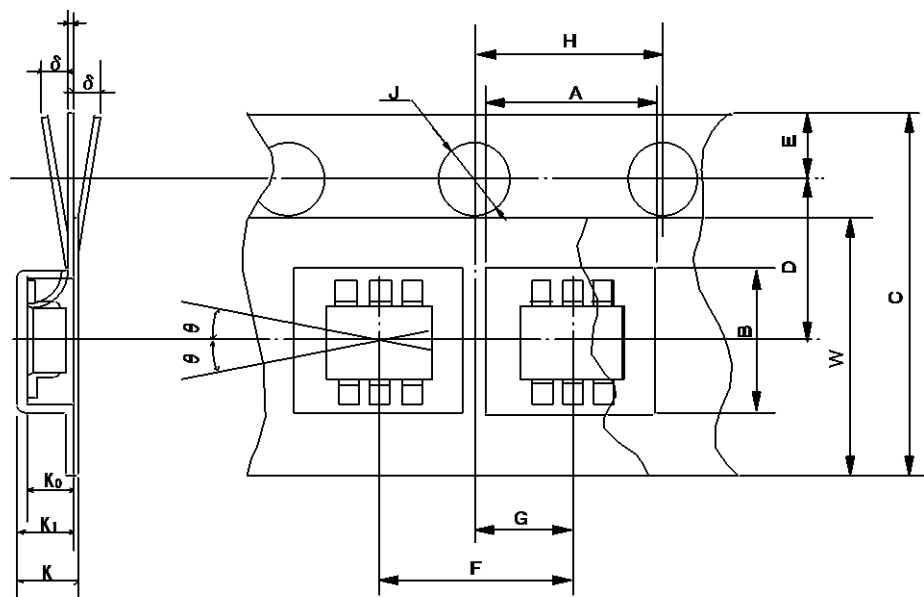
For more information about reel dimensions, please refer to figure 2. reel shape and dimensions.

## 3. Leader and trailer specifications at the time of the reel packing.

About leader and trailer specifications, please refer to figure 3. leader and Trailer.

Please inquire for the other packing specifications.

figure1. Tape shape and dimensions



Unit: mm

Item		symbol	Dimensions・Angle	Remarks
Square cavity for chip insertion	Length	A	3.20 $\begin{smallmatrix} \nearrow +0.1 \\ \searrow -0.1 \end{smallmatrix}$	Inner bottom dimensions
	Width	B	3.23 $\begin{smallmatrix} \nearrow +0.1 \\ \searrow -0.1 \end{smallmatrix}$	Inner bottom dimensions
	Depth	K <sub>0</sub>	1.425 ±0.1	Internal distance
	Pitch	F	4.0 ±0.1	Total error: $\begin{smallmatrix} +0.1 \\ -0.3 \end{smallmatrix}$ MAX/10Pitch
Round sprocket hole	Diameter	J	$\phi 1.5 \begin{smallmatrix} \nearrow +0.1 \\ \searrow -0.0 \end{smallmatrix}$	
	Pitch	H	4.0 ±0.1	Total error: $\begin{smallmatrix} +0.1 \\ -0.3 \end{smallmatrix}$ MAX/10Pitch
	Location	E	1.75 ±0.1	Distance between side of tape and center of hole
Distance between centers	Longitudinal	G	2.0 ±0.05	Distance between cavity and hole centers
	Transverse	D	3.5 ±0.1	Distance between cavity and hole centers
Cover tape	Width	W	5.5 ±0.2	Thickness : 0.1 MAX
Carrier tape	Width	C	8.0 ±0.2	Warp $\delta$ : 0.3 MAX
	Thickness	t	0.2 ±0.05	
	Outside cavity depth	K <sub>1</sub>	1.45 ±0.1	
Taped component	External dimensions			Refer to individual spec. sheet
	Misalignment	$\theta$	30° MAX	
Overall thickness		K	1.50 ±0.1	Combined thickness of cover and carrier tapes

Figure2-1. reel shape and dimensions.

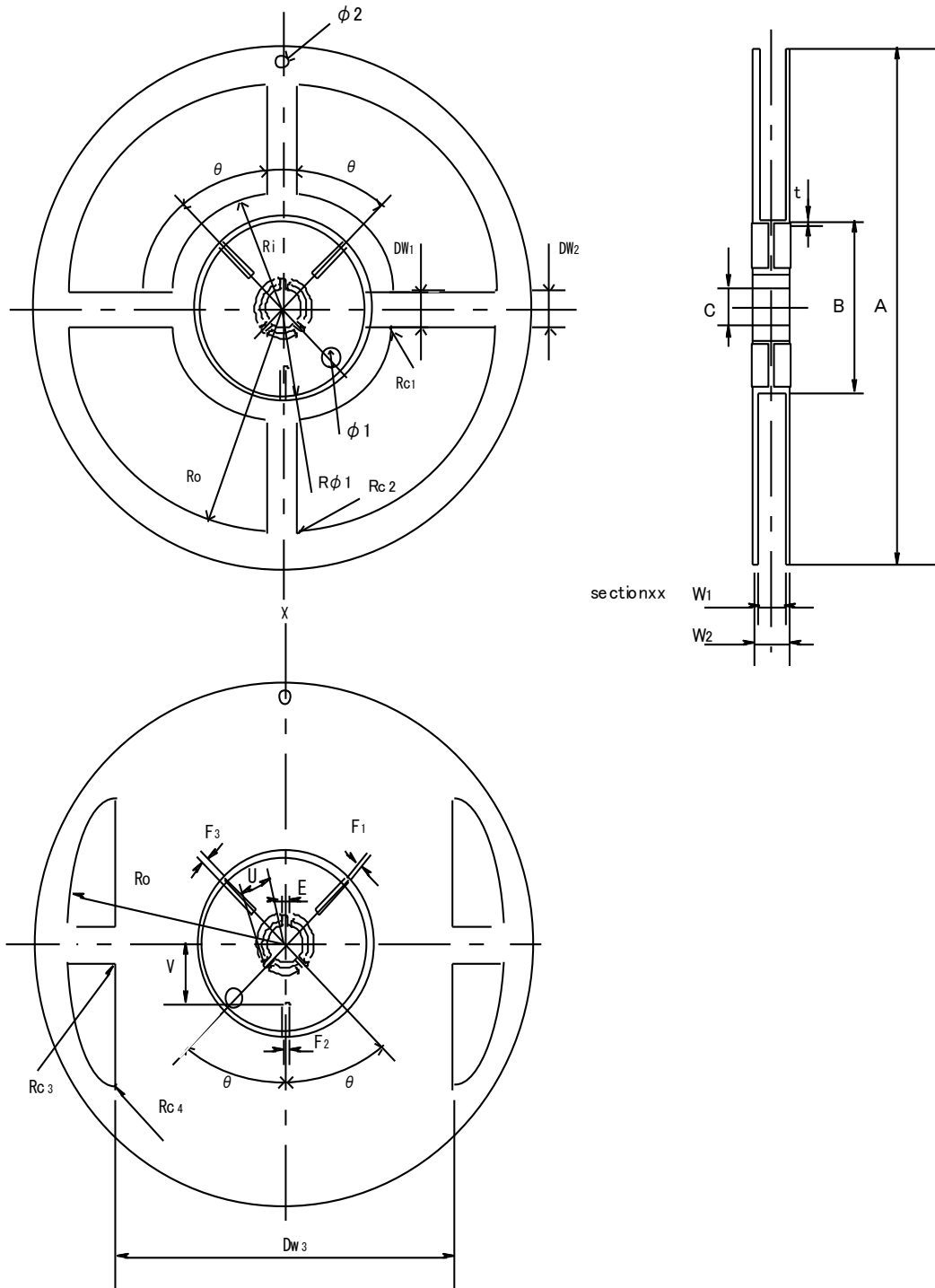
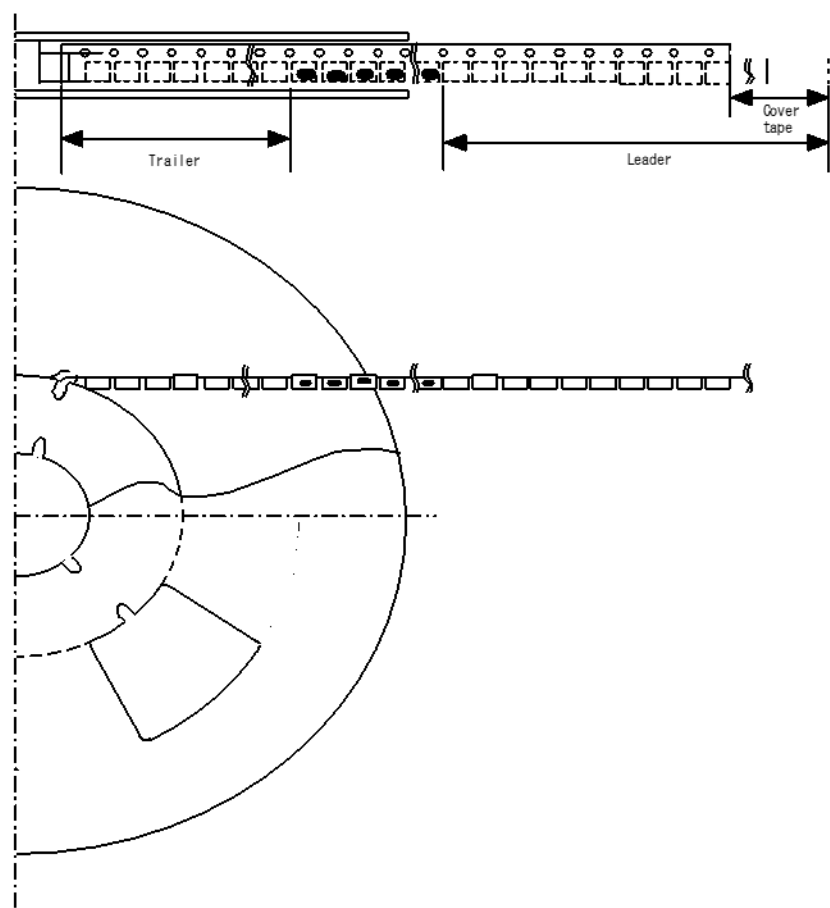


Figure2-2. Reel Dimensions (plastic reel)

unit:mm

Item			Symbol	Dimensions・Angle
Flange	Diameter		A	φ180±3
	Thickness		t	1.5
	Clearance between flanges (inside)		W1	9. 0±0. 5
	Clearance between flanges (outside)		W2	11. 4±1. 0
Hub	Diameter		B	φ60±1
	Hub Slit	Width	F1	5. 0±0. 3
			F2	3. 0±0. 3
			F3	4. 0±0. 3
		Depth	V	11.9
		Location	θ	60°
	Spindle hole diameter		c	φ13±0.5
	Key Way	Width	E	2.0±0.5
		Depth	U	10.5±0.5
		Location	θ	60°
Window	#1 Diameter		φ1	φ10
	Outer radius		Ro	R79±1
	Inner radius		R1	R36±1
	Conner roundness		Rc <sub>1</sub>	R15
			Rc <sub>2</sub>	R6
			Rc <sub>3</sub>	R6
			Rc <sub>4</sub>	R3
	Clearance between window		Dw <sub>1</sub>	18
			Dw <sub>2</sub>	12
			Dw <sub>3</sub>	110
	#2 Diameter		φ2	φ3
Marking	a label or stamp of product name etc. shall be affixed to both flange sides.	Type No(including standard identification and orientation mark) quantity of component and lot number shall be indicated.		

figure3. .Leader and trailer



Item		Specifications	Remarks
Leader	Cover tape	Cover tape will be drawn out 200mm min.	Tape end shall be fixed to outer layer with adhesive
	Carrier tape	Empty hollow 10pcs. over	Reeling direction shall be as shown above.
Trailer	Carrier tape	Empty hollow 20pcs. over	Tape end shall be fixed to hub with adhesive tape.